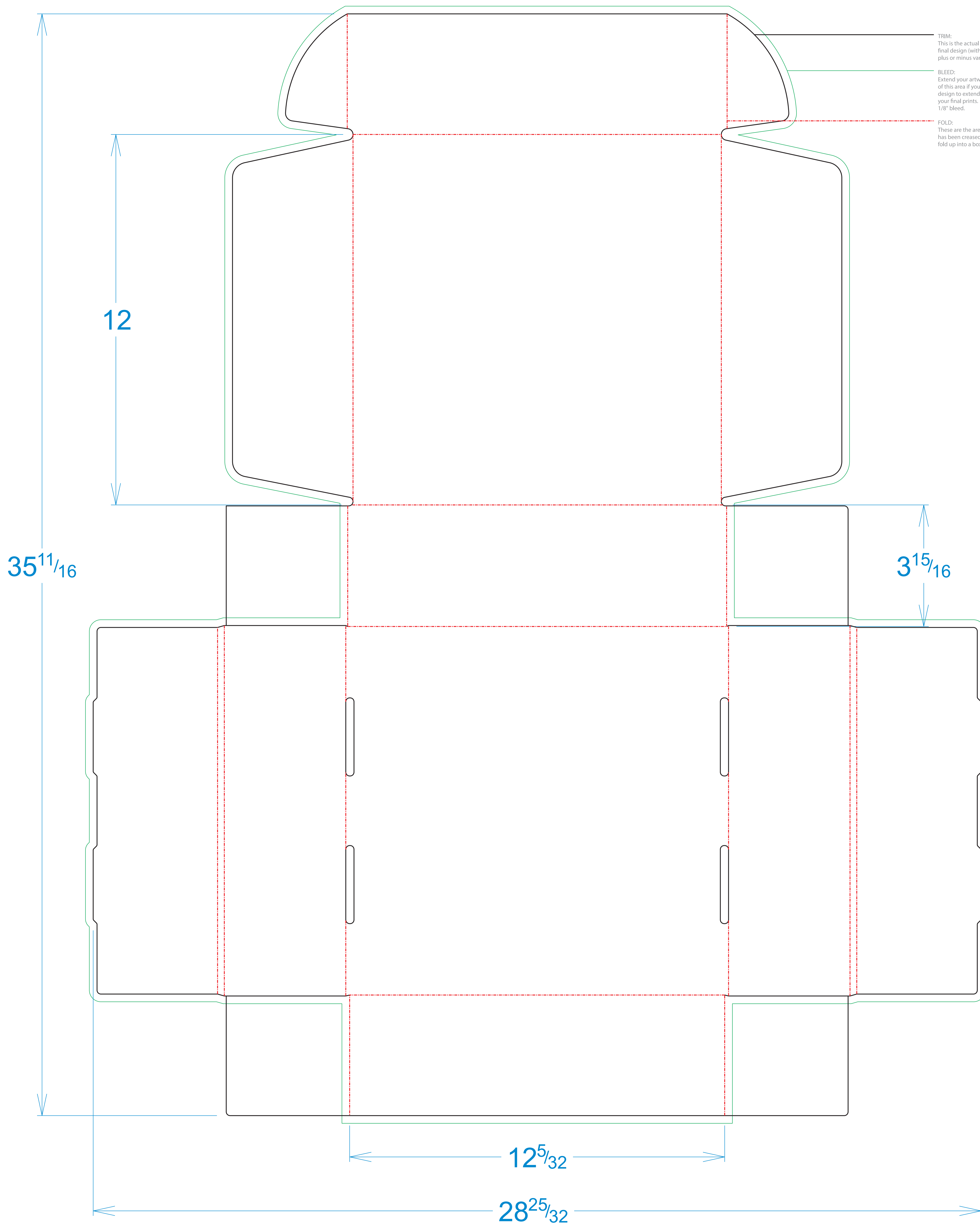


TRIM:  
This is the actual cut of the final design (with up to 1/8" plus or minus variance).

BLEED:  
Extend your artwork to the edge of this area if you want your design to extend to the edge of your final prints. We require 1/8" bleed.

FOLD:  
These are the areas the paper has been creased to allow it to fold up into a box.



TRIM:  
This is the actual  
final design (with  
plus or minus vari

BLEED:  
Extend your artwo  
of this area if you  
design to extend  
your final prints.  
1/8" bleed.

FOLD:  
These are the area  
has been created  
fold up into a box

12

$3\frac{15}{16}$

