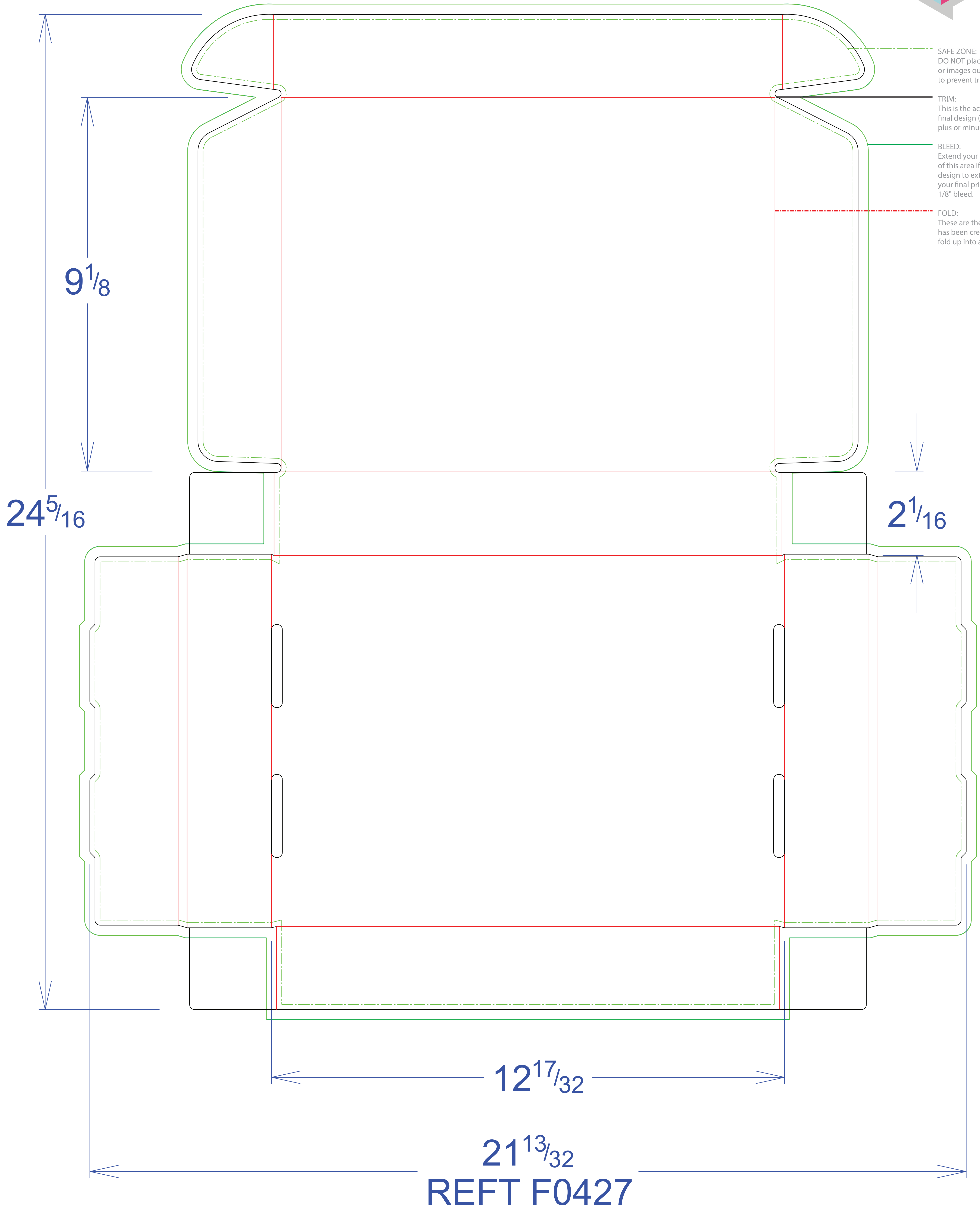


SAFE ZONE:
DO NOT place important text
or images outside this area
to prevent trimming.

TRIM:
This is the actual cut of the
final design (with up to 1/8"
plus or minus variance).

BLEED:
Extend your artwork to the edge
of this area if you want your
design to extend to the edge of
your final prints. We require
1/8" bleed.

FOLD:
These are the areas the paper
has been creased to allow it to
fold up into a box.



SAFE ZONE
DO NOT
or image
to prevent

TRIM:
This is the
final design
plus or minus

BLEED:
Extend your
of this art
design to
your final
1/8" bleed

FOLD:
These are
has been
fold up in

1/8

2 1/16

