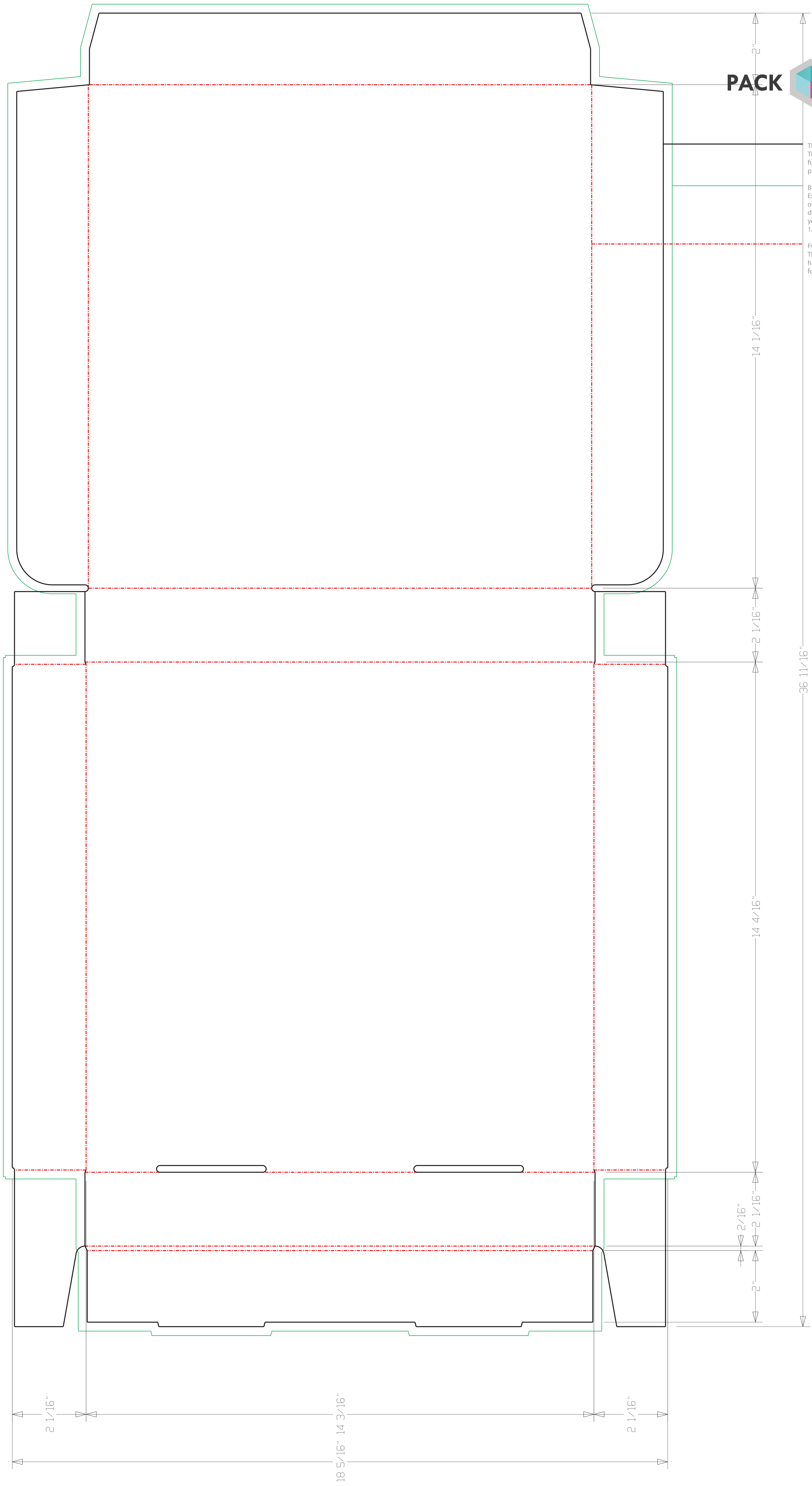


TRIM:
This is the actual cut of the final design (with up to 1/8" plus or minus variance).

BLEED:
Extend your artwork to the edge of this area if you want your design to extend to the edge of your final prints. We require 1/8" bleed.

FOLD:
These are the areas the paper has been creased to allow it to fold up into a box.



2 1/16"

18 5/16" 14 3/16"

2 1/16"

2"

14 1/16"

2 1/16"

14 4/16"

36 11/16"

2/16"

2"

