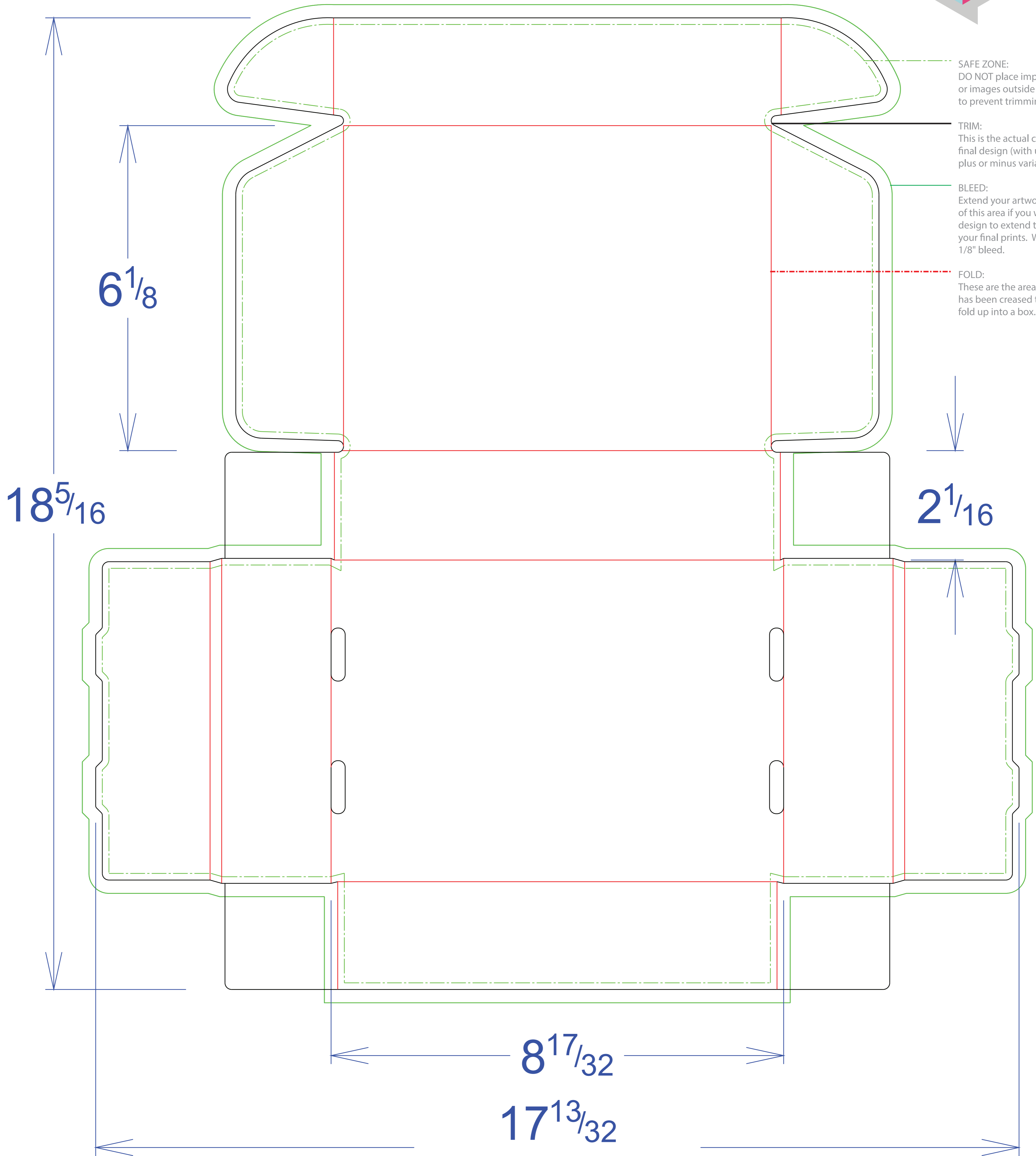


SAFE ZONE:  
DO NOT place important text  
or images outside this area  
to prevent trimming.

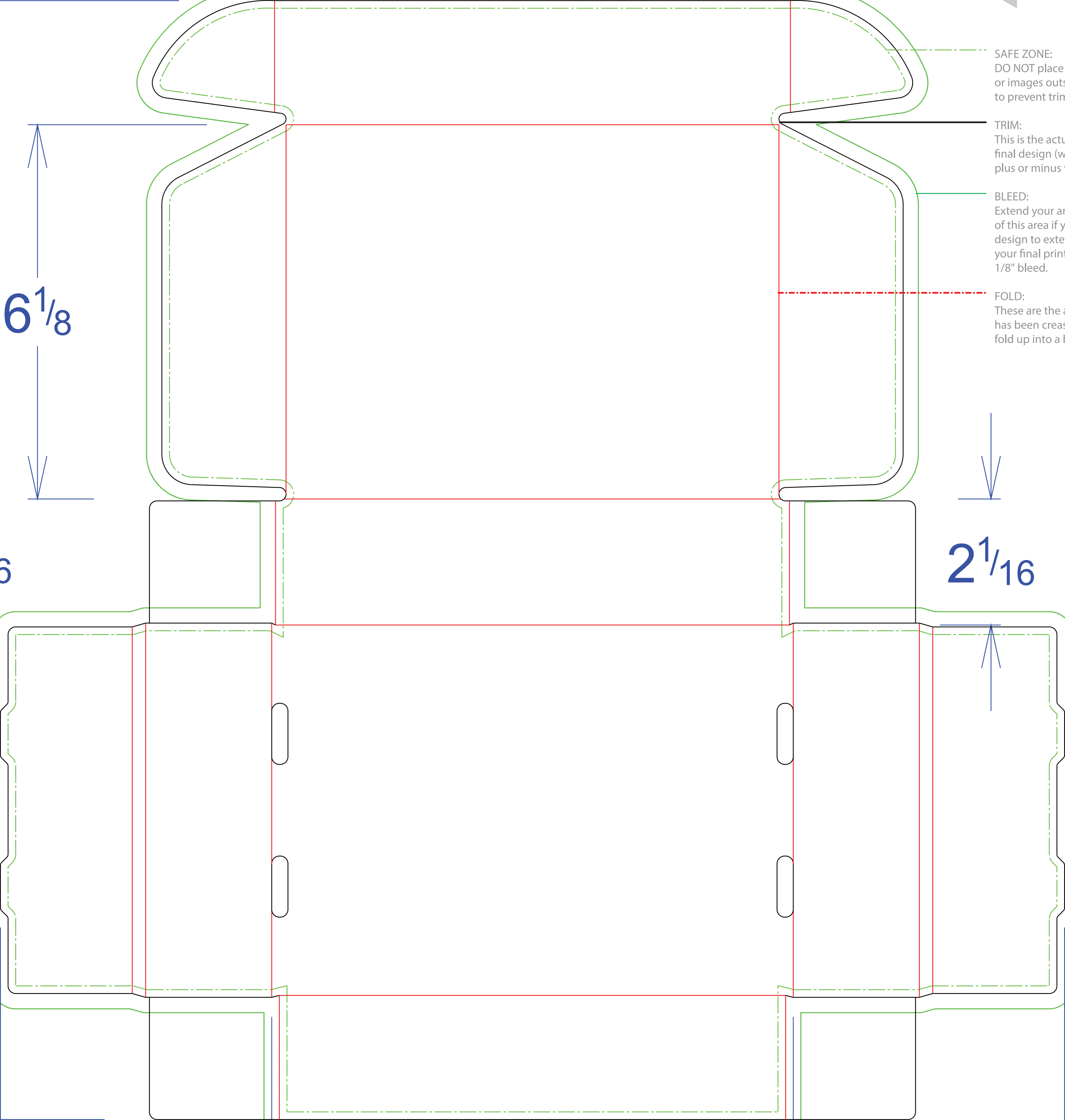
TRIM:  
This is the actual cut of the  
final design (with up to 1/8"  
plus or minus variance).

BLEED:  
Extend your artwork to the edge  
of this area if you want your  
design to extend to the edge of  
your final prints. We require  
1/8" bleed.

FOLD:  
These are the areas the paper  
has been creased to allow it to  
fold up into a box.



REFT F0427



SAFE ZONE:  
DO NOT place  
text or images outside  
this area to prevent trimming

TRIM:  
This is the actual  
width of the final design  
(width plus or minus  
trim)

BLEED:  
Extend your artwork  
into this area if you  
want your design to extend  
to the edge of your final print  
(1/8" bleed)

FOLD:  
These are the lines  
where the cover has been  
creased and will fold up into a book

6 1/8

6

2 1/16