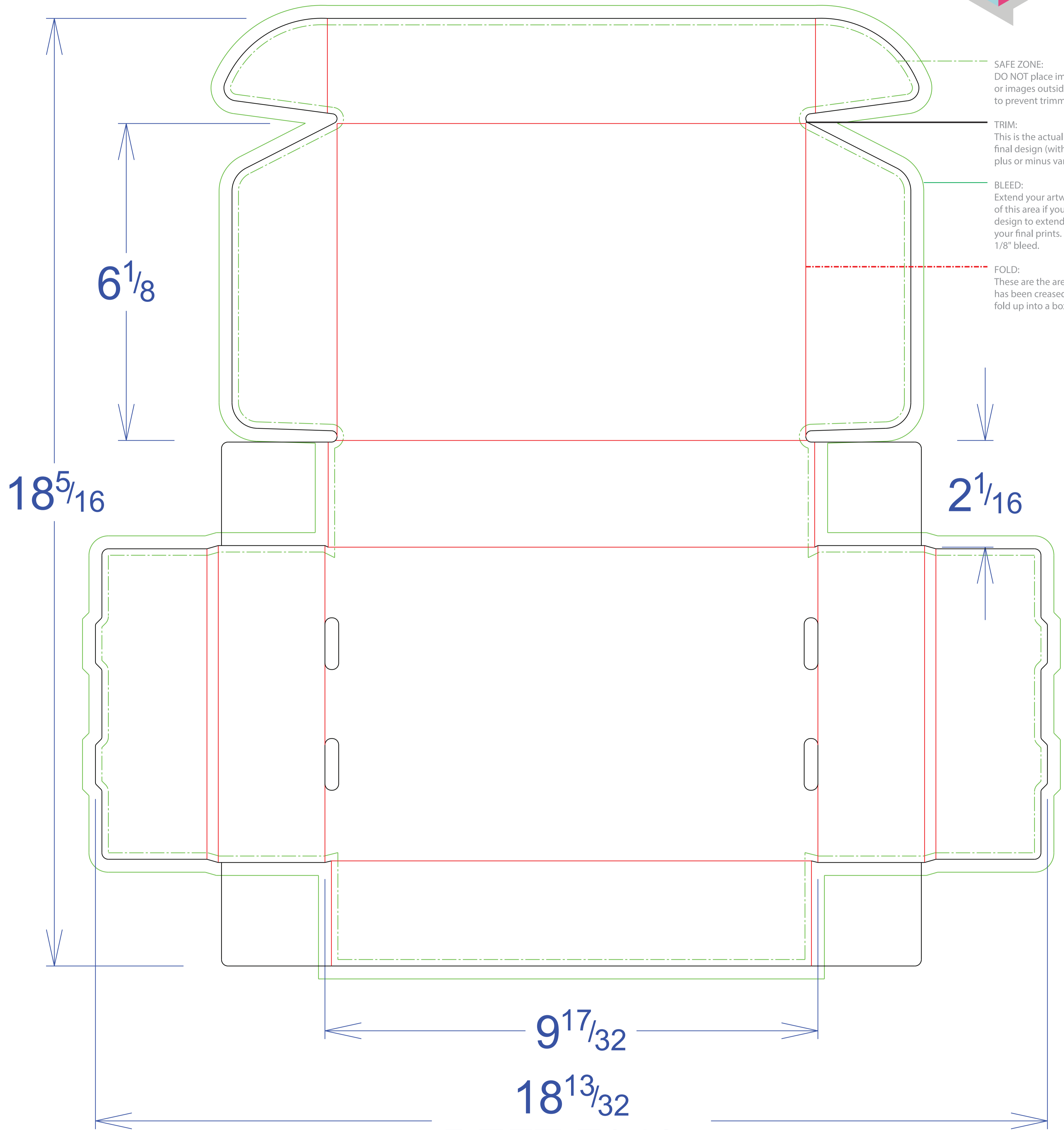


SAFE ZONE:
DO NOT place important text
or images outside this area
to prevent trimming.

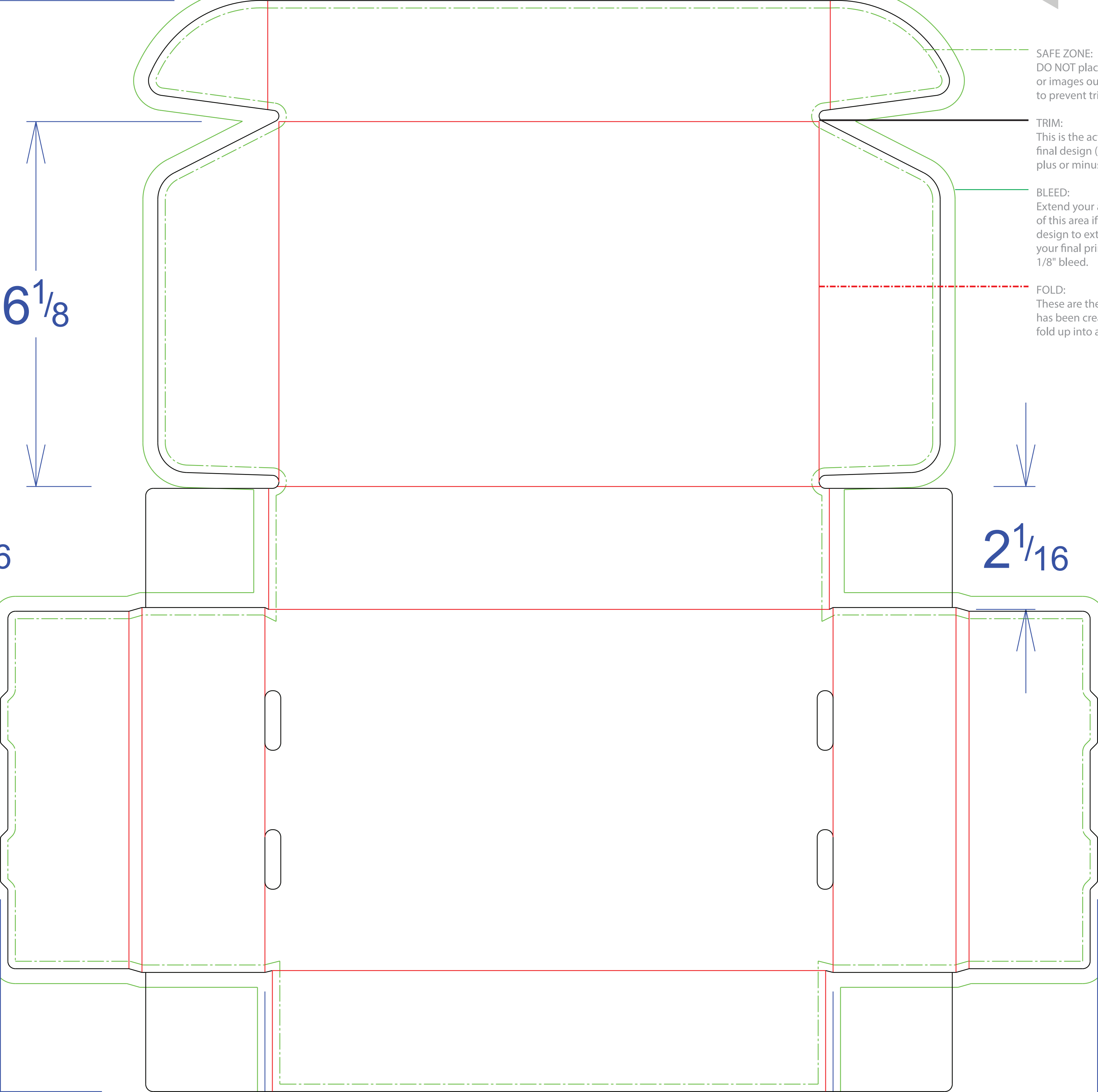
TRIM:
This is the actual cut of the
final design (with up to 1/8"
plus or minus variance).

BLEED:
Extend your artwork to the edge
of this area if you want your
design to extend to the edge of
your final prints. We require
1/8" bleed.

FOLD:
These are the areas the paper
has been creased to allow it to
fold up into a box.



REF T F0427



SAFE ZONE:
DO NOT place
text or images outside
this area to prevent trimming.

TRIM:
This is the actual
final design area,
plus or minus.

BLEED:
Extend your design
to the edges of this
area if you want
your final print to
include a 1/8" bleed.

FOLD:
These are the lines
where the cover
has been created to
fold up into a book.

6 1/8

6

2 1/16